

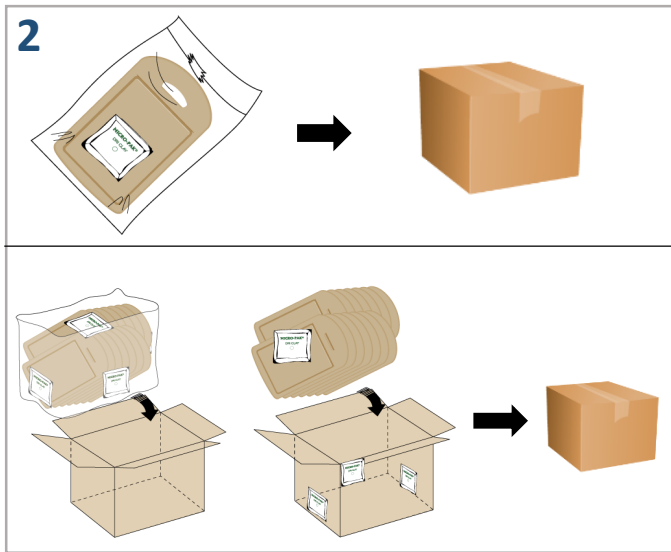
## Home Furnishings

Micro-Pak Dri Clay™ is easy to use. Just follow these simple steps:

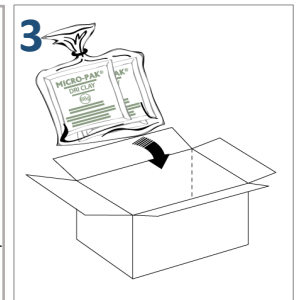
### SMALL ITEMS - INDIVIDUAL OR BULK PACKED



At the time of final packaging remove Dri Clay bags from the sealed polybag.

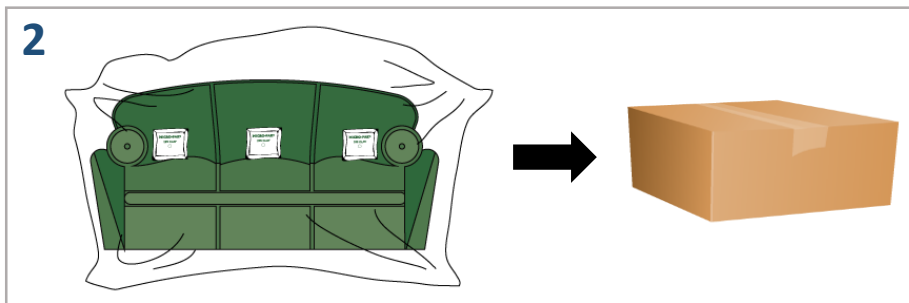
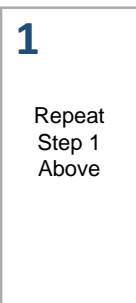


Place Dri Clay bag(s) inside the polybag or master carton and seal it immediately.



Store unused Dri Clay bags in the original polybag and seal it with tape. Store carton in a dry, cool place away from sunlight.

### LARGE ITEMS – PACKED IN MASTER POLYBAG OR MASTER CARTON



Distribute Dri Clay evenly inside master polybag or master carton together with the goods. Seal the master carton immediately.



### DRI CLAY DOSAGE EXAMPLES FOR INDIVIDUAL POLYBAG OR BOX PACKED ITEMS

The table below has example dosages for products of different sizes. For specific dosage requirements please follow the guidelines outlined on Page 2.

| Product                         | Estimated Quantity of Dri Clay (g) |  | Product        | Estimated Quantity of Dri Clay (g) |  |
|---------------------------------|------------------------------------|--|----------------|------------------------------------|--|
| Wood cutting board and utensils | 2g – 4g                            |  | Coffee Table   | 66g                                |  |
| Pillow                          | 6g                                 |  | Twin Mattress  | 66g                                |  |
| Medium Size Rug                 | 12g                                |  | Dining Table   | 132g                               |  |
|                                 |                                    |  | Sofa           | 198g                               |  |
|                                 |                                    |  | Queen Mattress | 198g                               |  |

## General Usage Guideline For Individual and Bulk Packed Items

Dri Clay is available in 5 different sizes – **2g, 6g, 17g, 33g, 66g.**

Dri Clay can be used with individually packed or bulk packed items. Calculate the volume of the packaging (polybag, box, carton) and use the guideline below to determine the minimum quantity of Dri Clay needed. Place the Dri Clay bags inside the packaging together with the product.

### Small Items and Individually Packed Items

| Package Volume |             | Minimum Weight of Dri Clay Needed (g) | Suggested Usage |
|----------------|-------------|---------------------------------------|-----------------|
| (CU Inches)    | (CU Meters) |                                       |                 |
| Up to 200      | Up to 0.003 | 2                                     | 2g (1 piece)    |
| Up to 400      | Up to 0.007 | 4                                     | 2g (2 pieces)   |
| Up to 1000     | Up to 0.016 | 6                                     | 6g (1 piece)    |
| Up to 2000     | Up to 0.033 | 12                                    | 6g (2 pieces)   |

### Large Items and Bulk Packed Items

| Package Volume |             | Minimum Weight of Dri Clay Needed (g) | Suggested Usage                   |
|----------------|-------------|---------------------------------------|-----------------------------------|
| (CU Inches)    | (CU Meters) |                                       |                                   |
| Up to 3500     | Up to 0.057 | 17                                    | 17g (1 piece)                     |
| Up to 5500     | Up to 0.090 | 30                                    | 17g (2 pieces) or 33g (1 piece)   |
| Up to 8000     | Up to 0.131 | 45                                    | 17g (3 pieces)                    |
| Up to 12000    | Up to 0.197 | 65                                    | 66g (1 piece) or 33g (2 pieces)   |
| Up to 24000    | Up to 0.393 | 130                                   | 66g (2 pieces) or 33g (4 pieces)  |
| Up to 36000    | Up to 0.590 | 195                                   | 66g (3 pieces) or 33g (6 pieces)  |
| Up to 48000    | Up to 0.787 | 330                                   | 66g (5 pieces) or 33g (10 pieces) |
| Up to 64000    | Up to 1.049 | 460                                   | 66g (7 pieces) or 33g (14 pieces) |

**Remarks:** You can put different sizes of Dri Clay bags into the packaging as long as the total weight of Dri Clay is not less than the minimum amount. Additional Dri Clay bags may be required depending on the sensitivity of the product to moisture damage, the season, and the severity of weather conditions. Please contact Micro-Pak at [info@micropakltd.com](mailto:info@micropakltd.com) for specific usage requirements and always refer to your customers' orders for special instructions.